

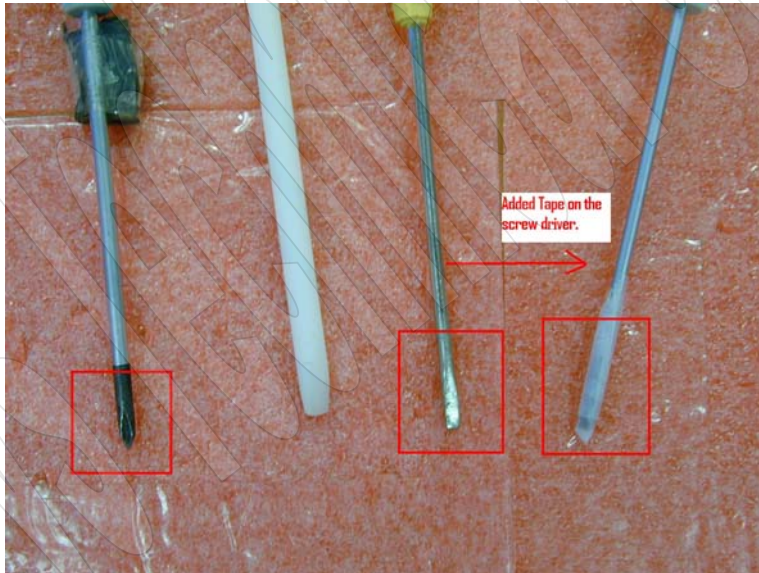
Instructions on changing the Dip Switch setting for the Dothan CPU.

(Note: If any time during this process you feel that you need help, please call Fry's Technical Support at 510.683.6249.)

A. The following tools are required.

- Phillips Screwdriver
- Slotted (Flat Head) Screwdriver

(Note: Wrap Scotch tape around the tip of the slotted screwdriver, as illustrated below.)



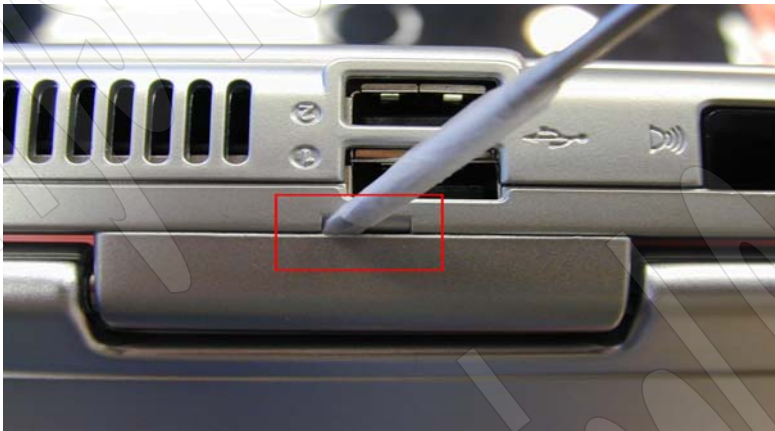
B. First, make sure that the AC Adaptor and any external devices are not connected to the Laptop before starting. Also, be sure to remove the battery from the bottom of the Laptop and lay it to the side. To remove the battery there is a latch on the bottom that you pull up and that will release the battery from the battery compartment. You simply will need to pull it out.



C. Set up your Laptop as illustrated below. Notice the battery has been removed from the bottom of the Laptop. This is just a reminder to remove the battery. You can set it to the side so that it is not in your way during this process.



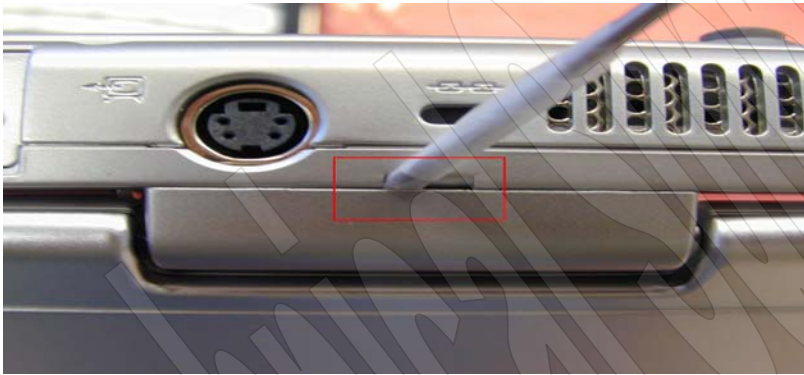
D. Using the Slotted Screwdriver, insert it into the slot in the middle of the Left Side Hinge. Press down towards you until it becomes loose as illustrated below. See the red square.



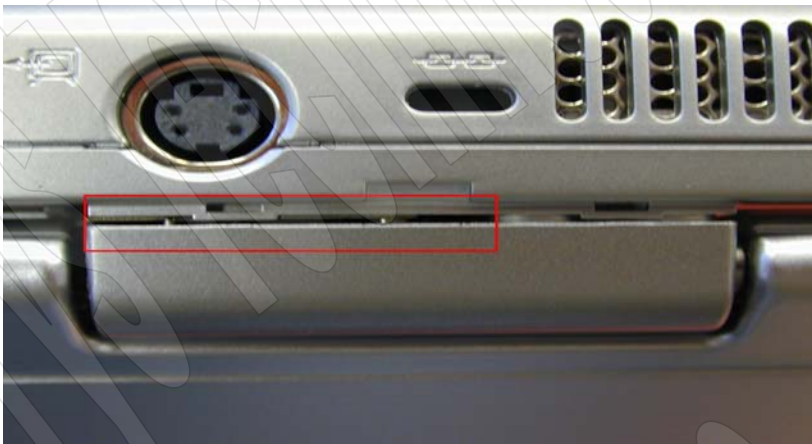
E. The Left Side Hinge once loose should look as illustrated below. See the red square.



F. Using the Slotted Screwdriver, insert it into the slot in the middle of the Right Side Hinge. Press down towards you until it becomes loose as illustrated below. See the red square.



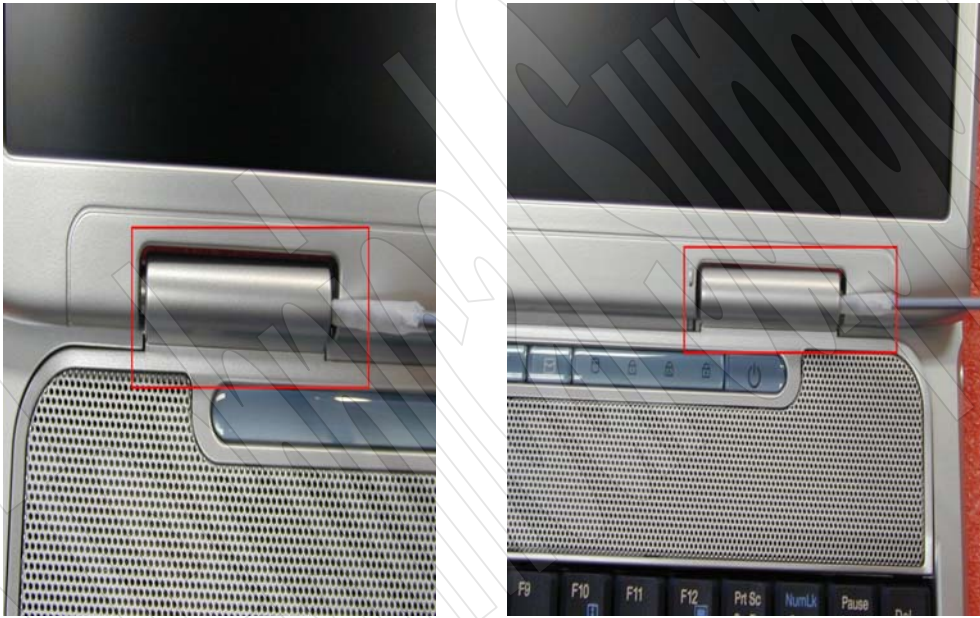
G. The Right Side Hinge once loose should look as illustrated below. See the red square.



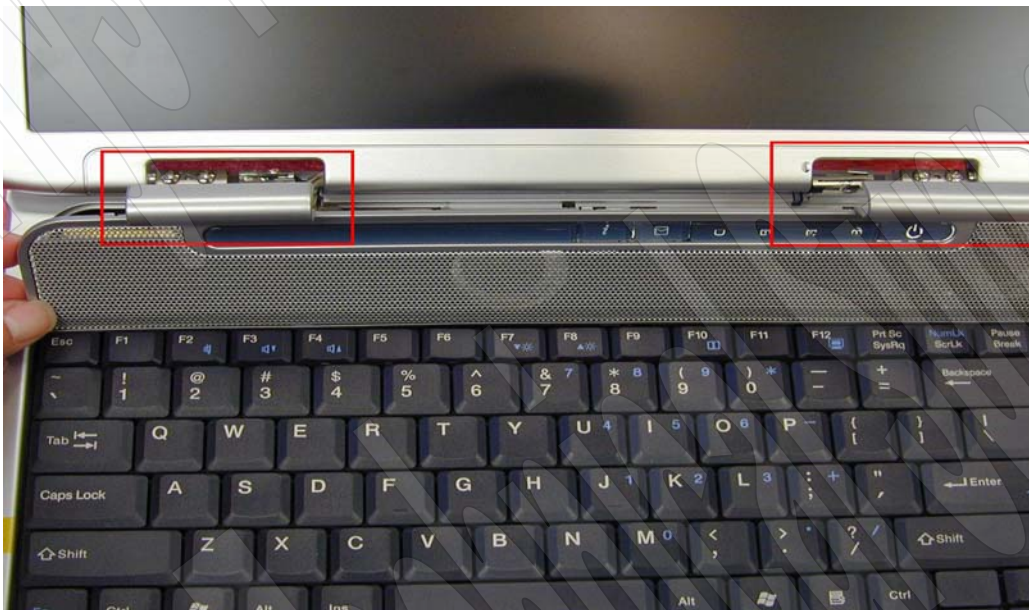
H. Turn the Laptop over on its bottom and open the Display as illustrated below.



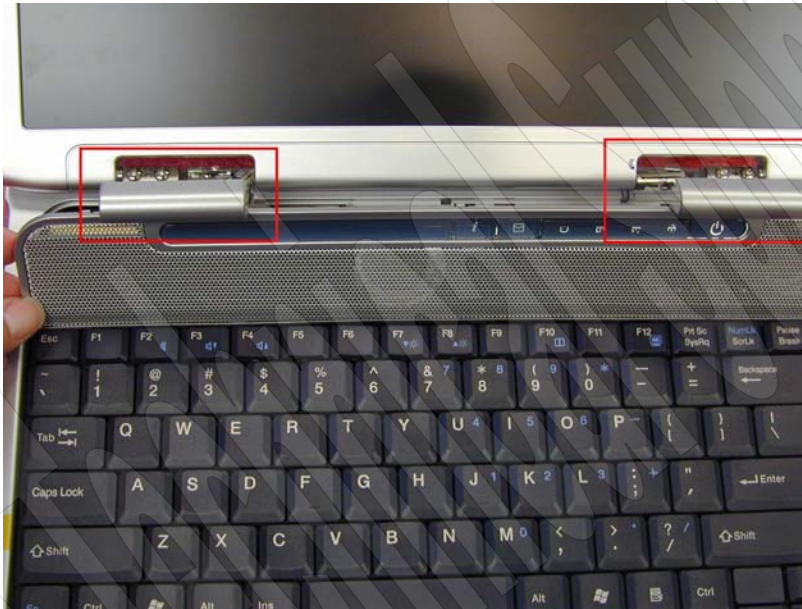
I. Using the Slotted Screwdriver, insert it into the Left & Right Hinge and pull towards you until it becomes detached from the Display as illustrated below. See the red square.



J. Now that you have both the Left & Right Side Hinge loose, it should look as illustrated below. See the two red squares.



K. Grab the top grill and pull it up away from the Display as illustrated below. See the two red squares.



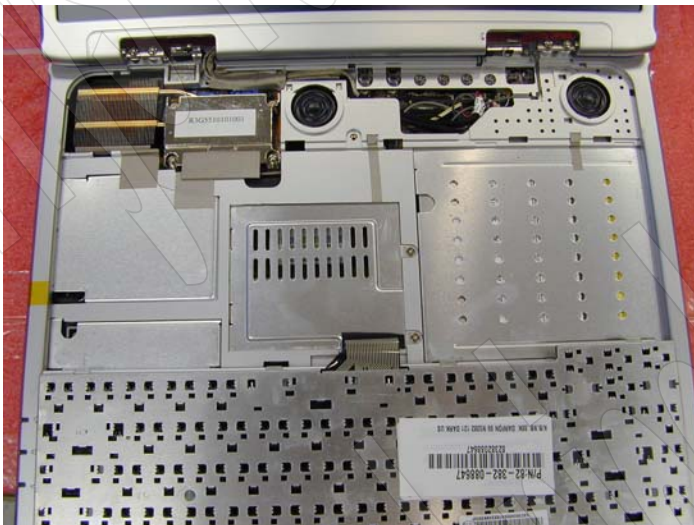
L. Set the top grill to the side.



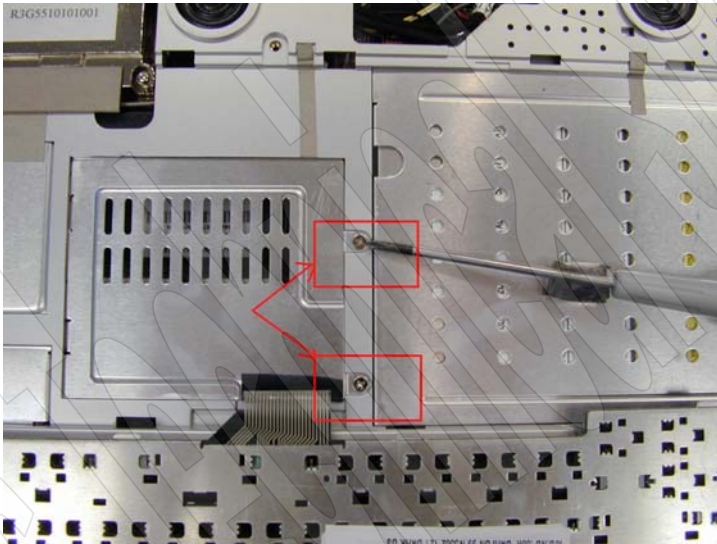
M. Using the Phillips Screwdriver, unscrew the one screw that is illustrated below. See the red square.



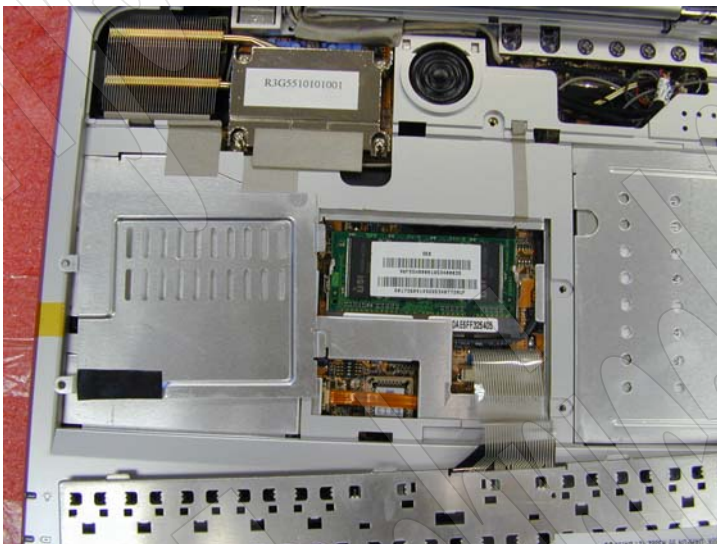
N. Flip the keyboard towards you, so that it lays down on the front part of the Laptop. Be very careful not to pull it away from the Laptop because the keyboard is connected to the Laptop via a cable. If pulled out it can cause **DAMAGE** to the **KEYBOARD** and or **LAPTOP**.



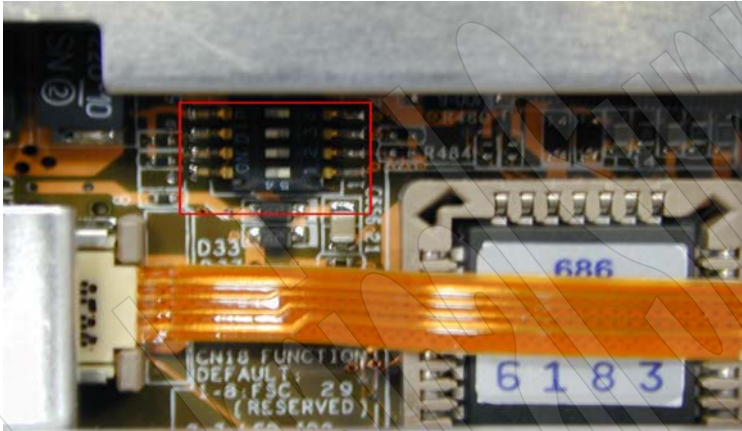
Q. Using the Phillips Screwdriver, unscrew the two screws illustrated below. See the two red squares. If the screws fall into the Laptop and you are not able to retrieve them. Call Fry's Technical Support at 510.683.6249. To prevent damage or shorting out your Laptop, **"DO NOT TURN THE LAPTOP ON !!!"**



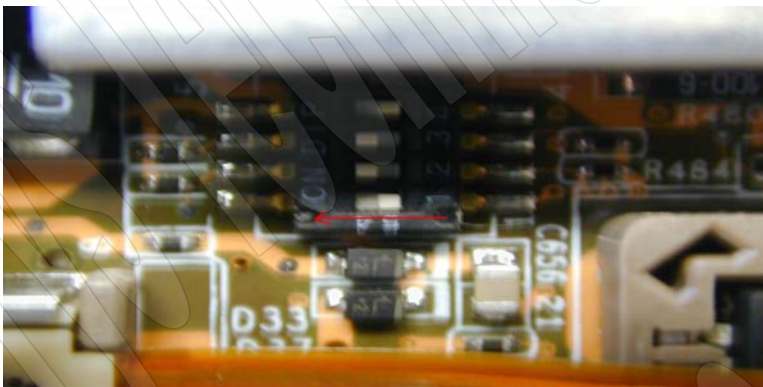
P. Once you remove the two screws and the metal cover, you should see what is illustrated below.



Q. The location of the Dip Switch is illustrated below. See the red square.



R. Dip Switch 1 is closest to the ribbon cable as illustrated above & below. Using the Slotted Screwdriver move the Dip Switch to the left as illustrated below by the red arrow.



S. The final setting for the Dip Switch for the Dothan CPU, is illustrated below. See the red circle.



T. To re-assemble the Laptop, please reverse the steps above. Starting from **Step Q.**