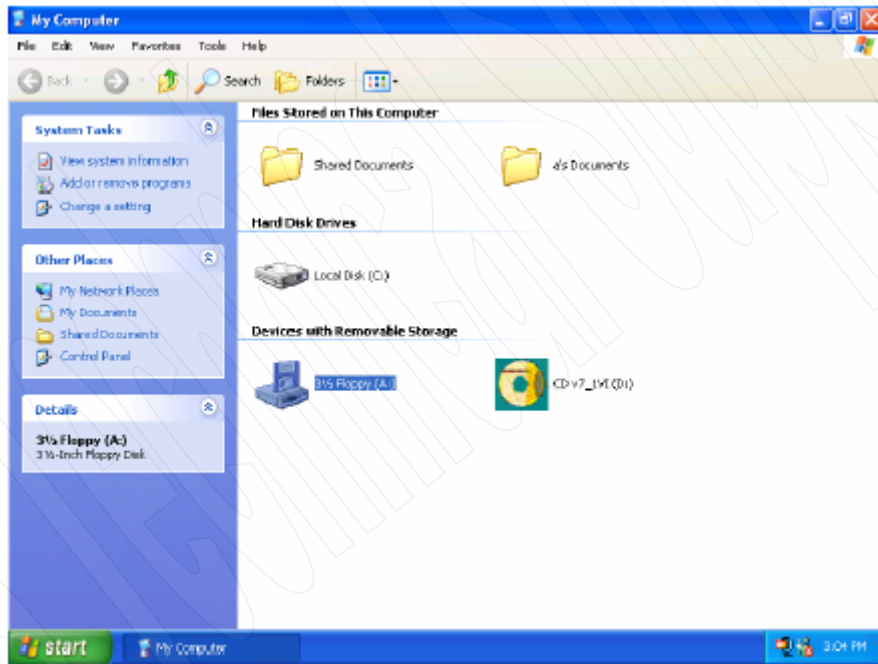
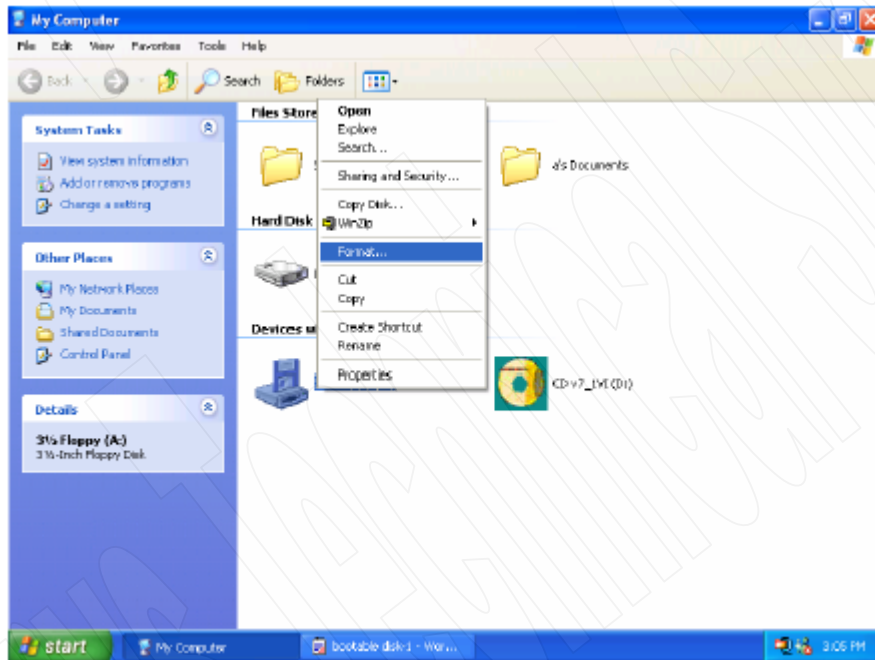


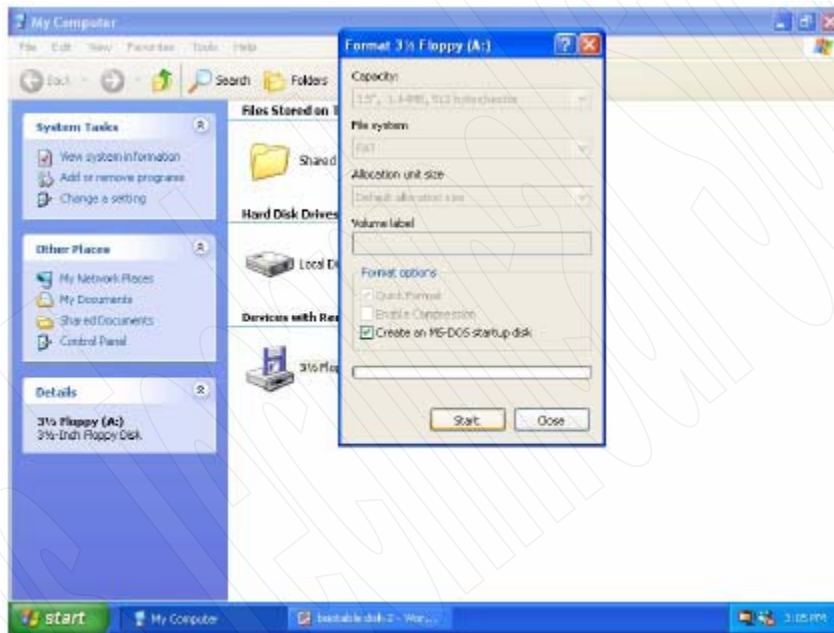
1. To make a bootable floppy WinXP (If you are using WinME or Win 2000 please contact Microsoft on how to get a bootable floppy), please double click on “My Computer.”



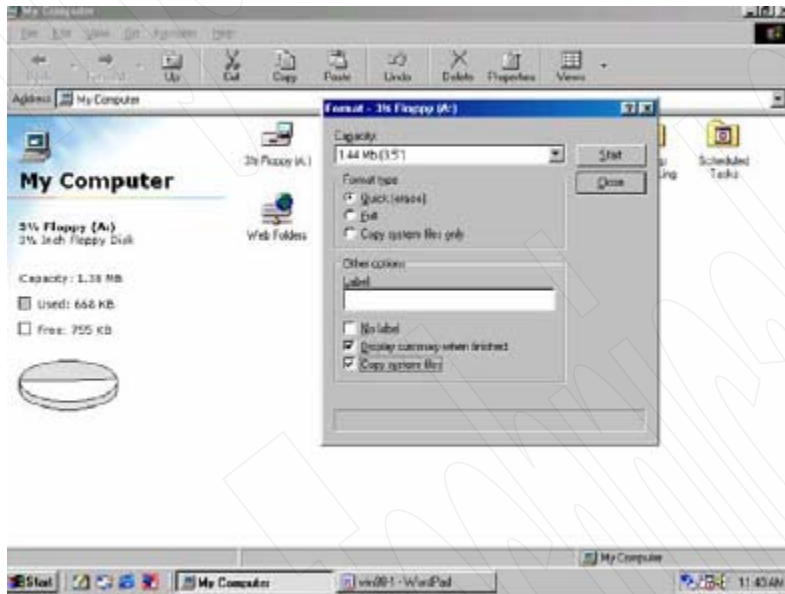
2. Right click on your floppy drive and select format.



3. Please click on the “Quick format” function and the “Create an MS-DOS startup disk” Then click on the start button.



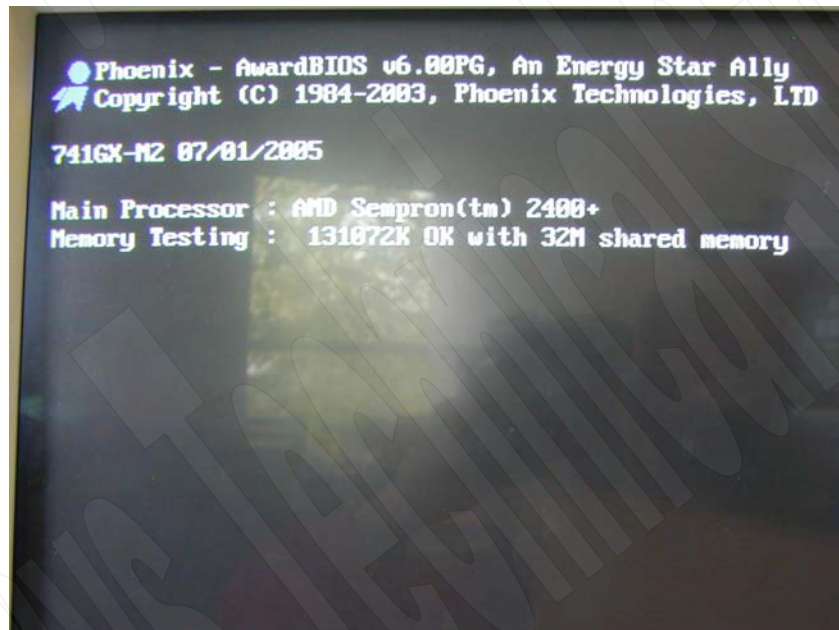
4. If you are using Win95 or Win98 make sure that the “Quick Format” is checked (Its should be checked by default) and also check the “” Copy system files” option.



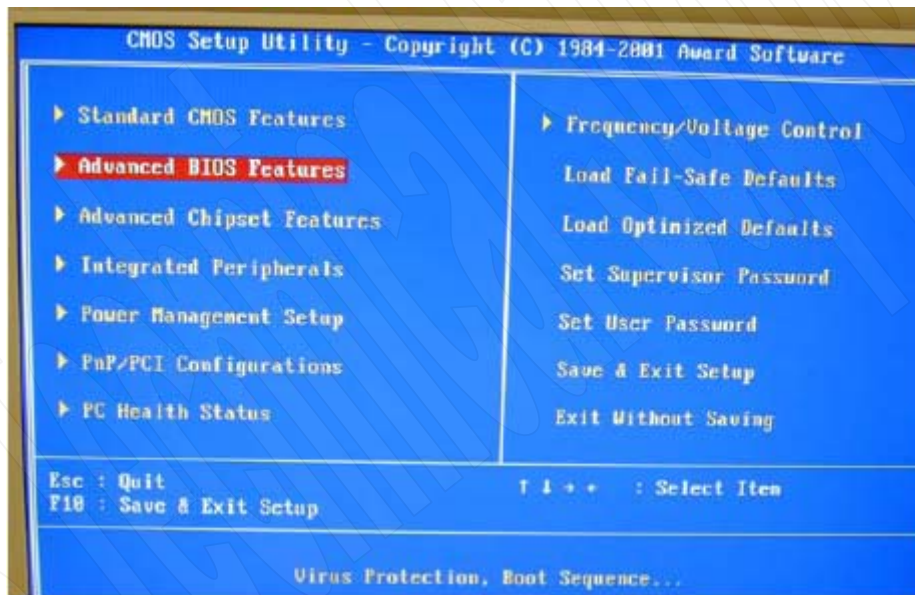
5. Once the process finished visit our support site at www.fryssupport.net to download the "" del-pat" file. After you download the file copy it to your bootable disk by right clicking on the "" del-pat," highlighting the "Send To," and selecting the "3.5 Floppy (A:)."



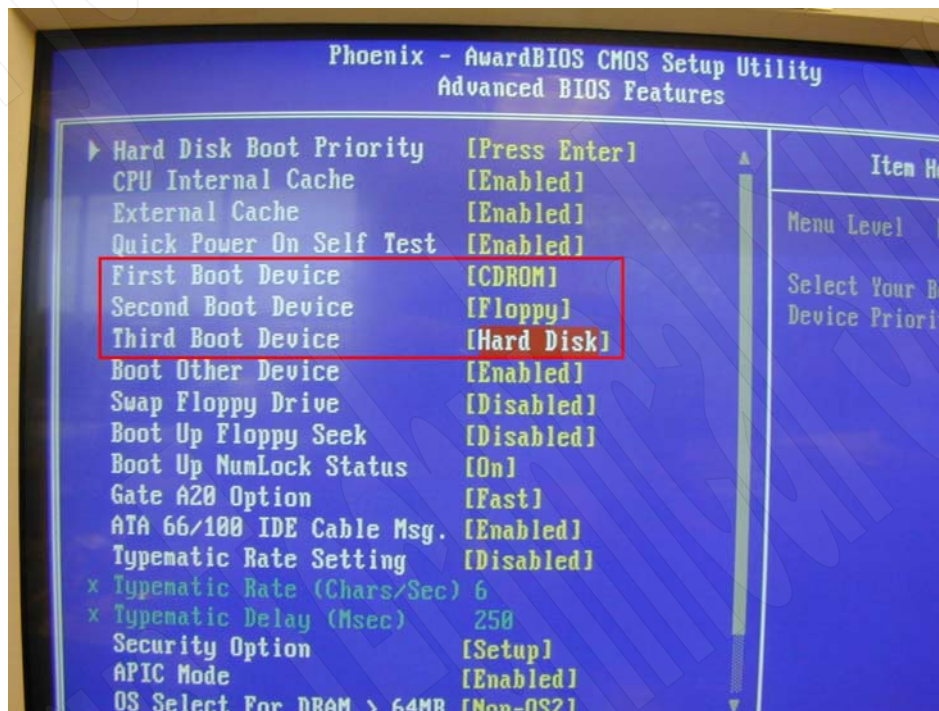
6. You can now restart your computer and prepare to enter the BIOS by hitting the "del" button repeatedly when you see the initial post screen.



7. Once you enter the BIOS double check your boot sequence found in “” Advanced BIOS Features.”

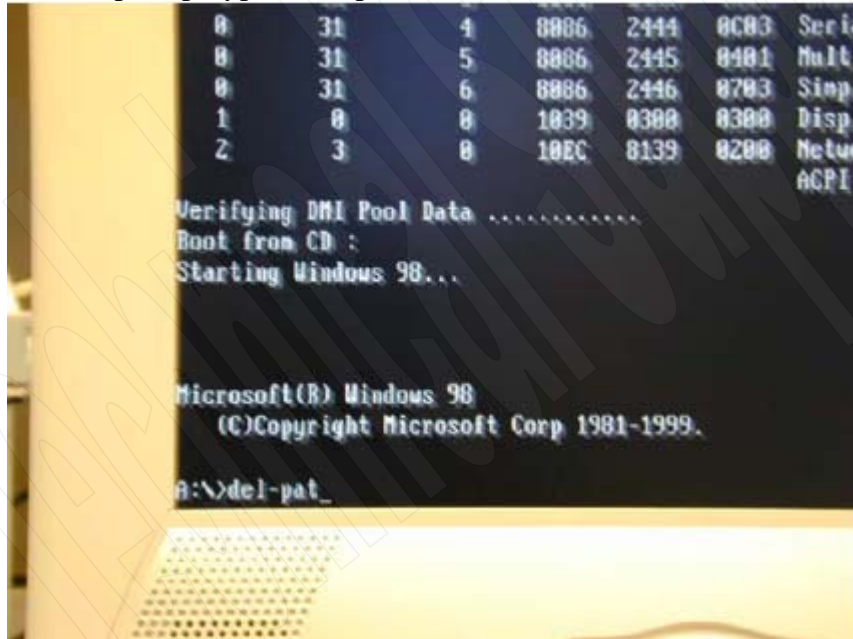


8. Make sure that your boot sequence is CDROM>> FLOPPY >> Hard Disk



9. Once your boot sequence has been set, save and exit the BIOS and make sure that you have inserted your boot disk with the “del-pat” file.

AT the DOS A:\> prompt type “del -pat” and hit enter



10. The system will begin to delete your partition. The red hard drive LED should turn solid or flash signaling that the system is busy.



11. Once the process is complete the red HDD LED will turn off and another A:\> prompt will appear on the screen.



12. Congratulations! You have deleted your partition and are now ready to install your Operating System.