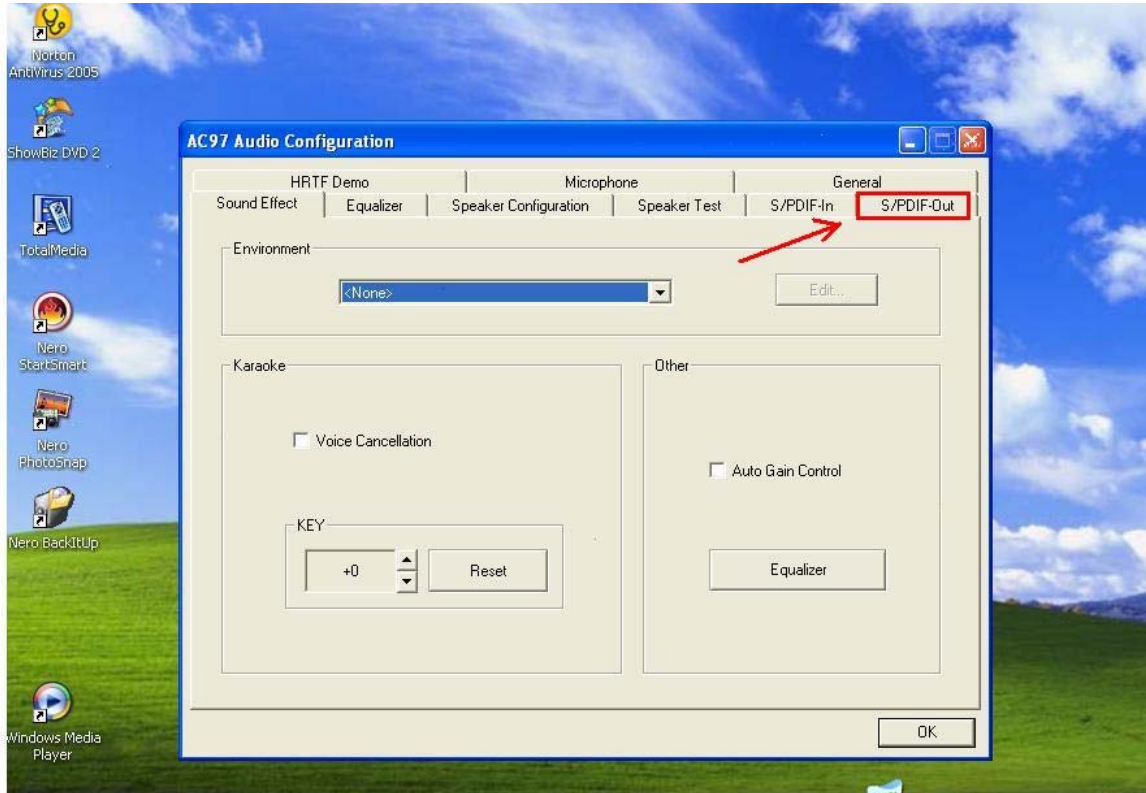


Q. When I enabled “time shifting” in Total Media, the sound for live TV became distorted.

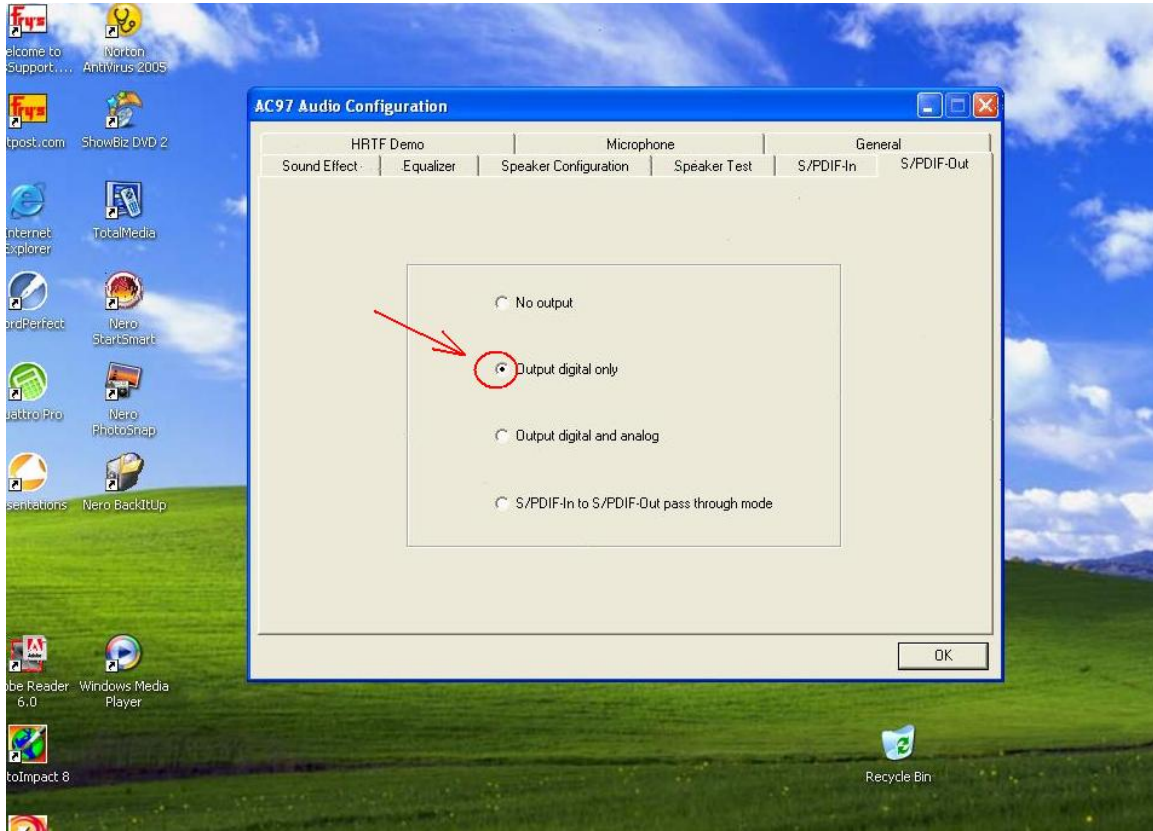
A. Click on **Sound Effect at Taskbar** or go to **Start → Control Panel → Sound Effect Manager**.



2: Click on **S/PDIF-Out**.



3: Check on **Output digital only** then press **OK**



4. Please restart your system and run **Total Media**.