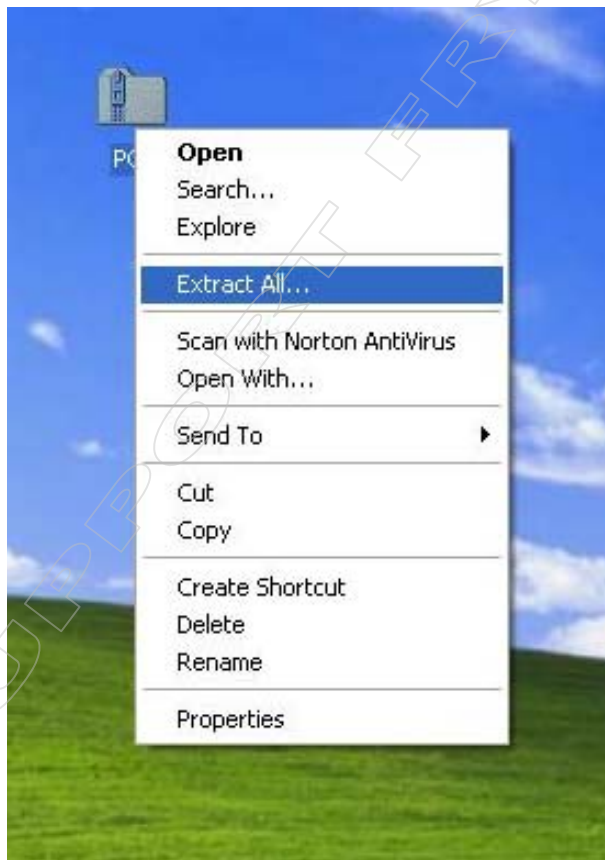


FM7740 MODEM DRIVER UPDATE PROCEDURE



Please download the driver file PCI.ZIP and save the File on your desktop, or your choice on the hard drive.



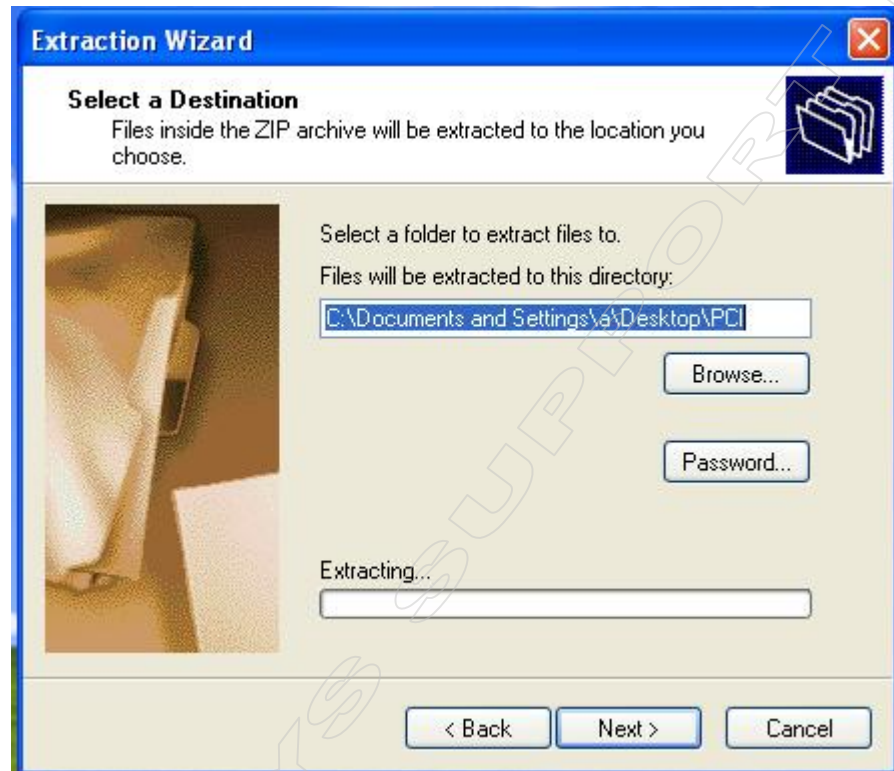
Place your Mouse cursor on the icon and right click your mouse to see the sub menu. Choose **Extrct All...**

FM7740 MODEM DRIVER UPDATE PROCEDURE

Please follow the Extraction Wizard to Extract the Zip file



Click **Next**



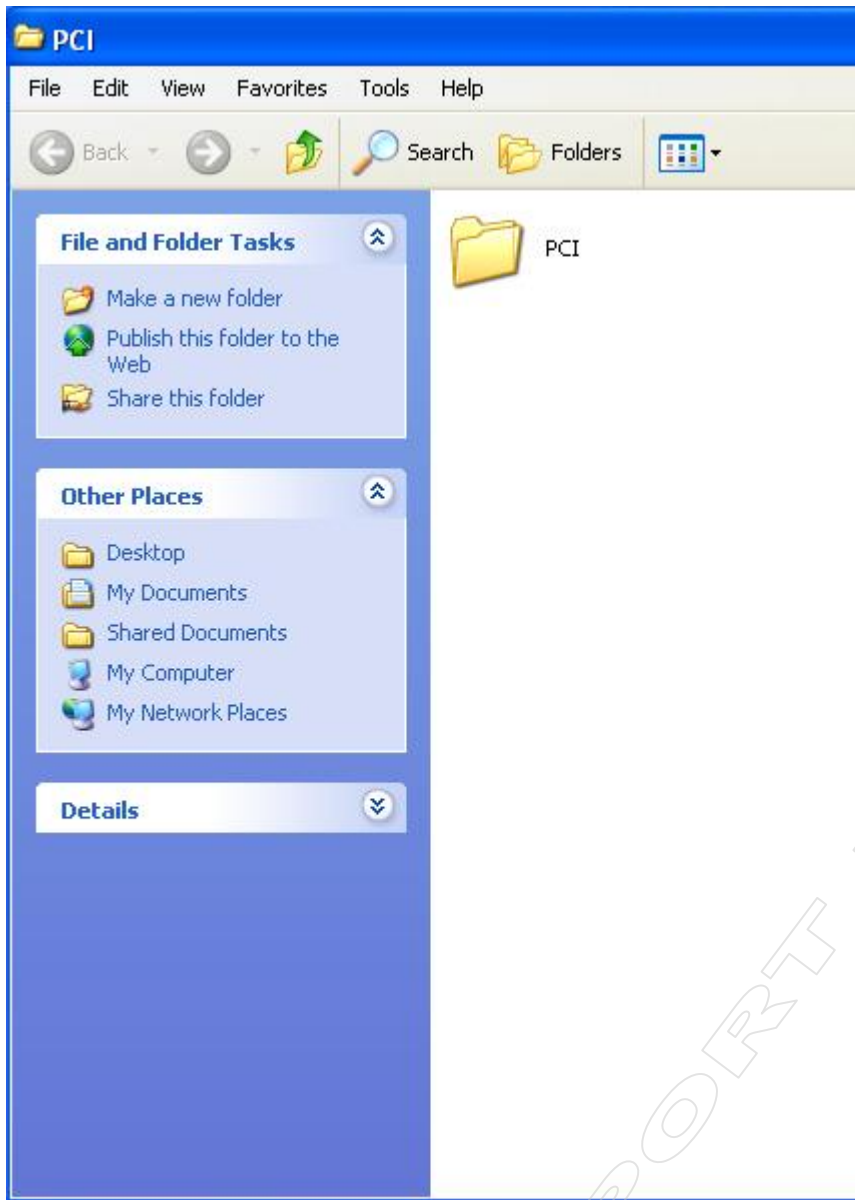
Click **Next**

FM7740 MODEM DRIVER UPDATE PROCEDURE



Click **Finish**

FM7740 MODEM DRIVER UPDATE PROCEDURE



A Folder called PCI, will pop-up

Start Device Manager

Click **Start**, and then click **Control Panel**.

Click **Performance and Maintenance**, and then click **System**.

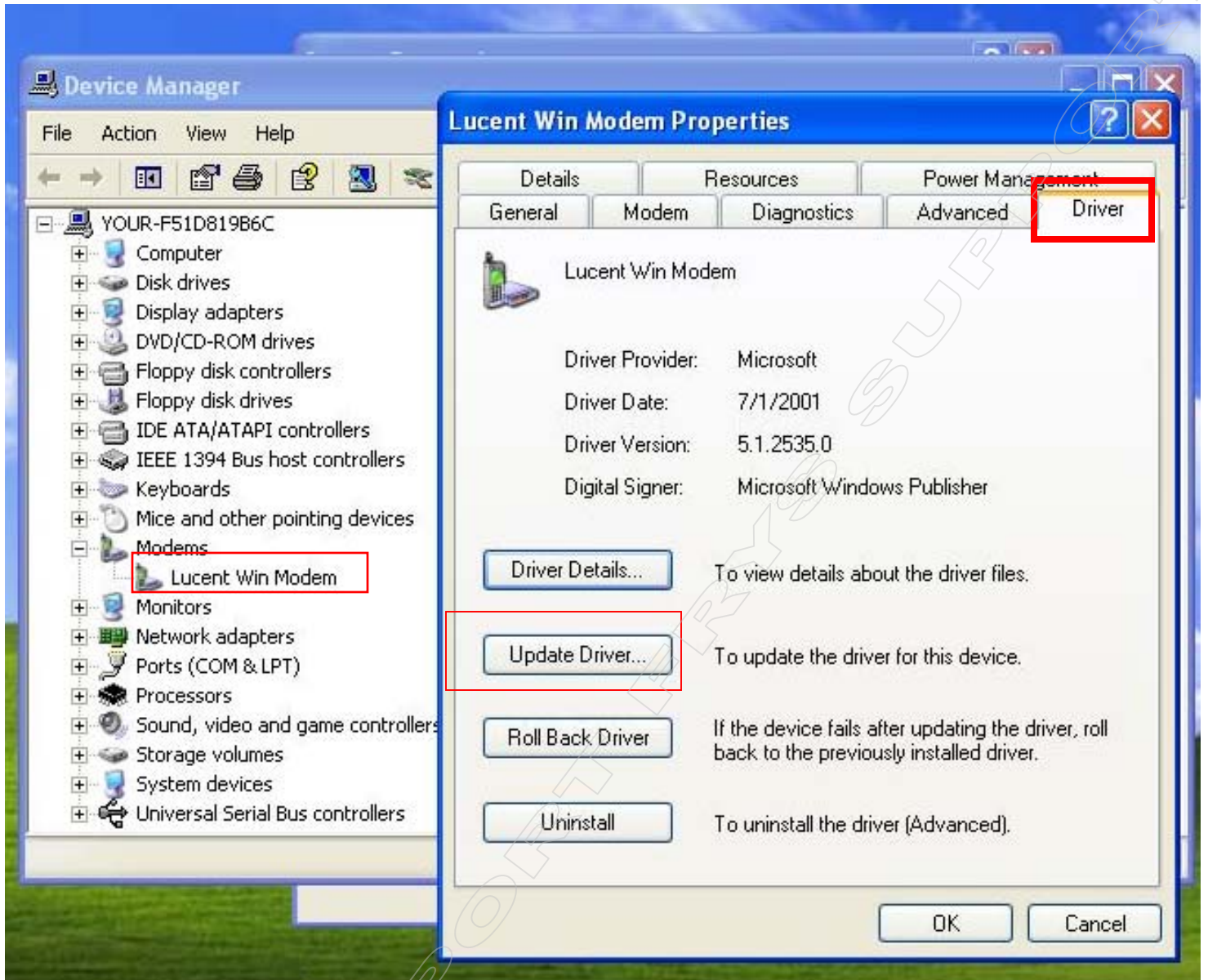
Click the **Hardware** tab, and then click **Device Manager**.

FM7740 MODEM DRIVER UPDATE PROCEDURE



Click on the + to expand Modems

FM7740 MODEM DRIVER UPDATE PROCEDURE



Double Click on “**Lucent Win Modem**” For the “**Lucent Win Modem Properties Screen**” then click on the **Driver** tab, Next Click on “**Update Driver...**”

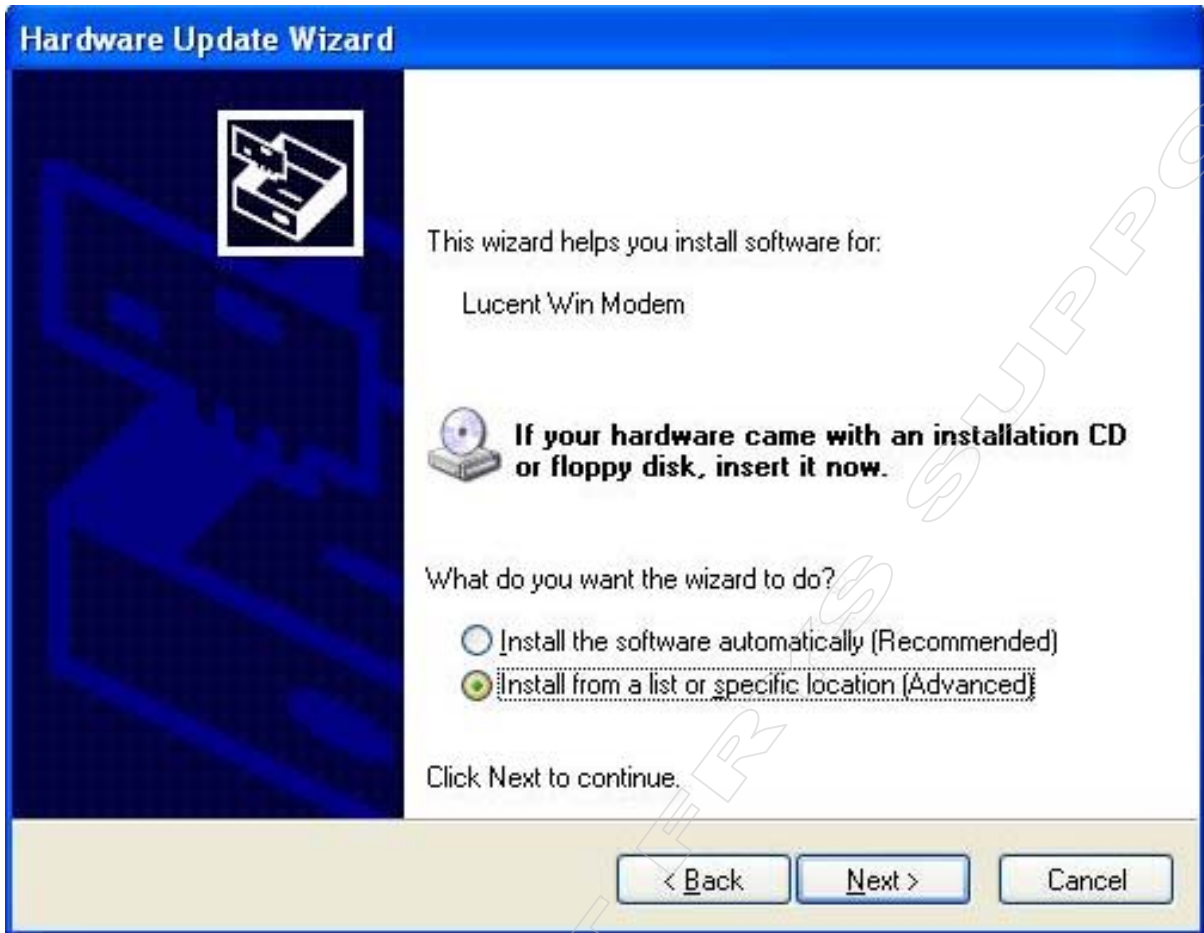
FM7740 MODEM DRIVER UPDATE PROCEDURE

Follow the Hard Ware Update Wizard Steps Below:



Choose **No, not this time** then click **Next**

FM7740 MODEM DRIVER UPDATE PROCEDURE



Pick **Install from a list or specific location (Advanced)** then click **Next**.

FM7740 MODEM DRIVER UPDATE PROCEDURE

Hardware Update Wizard

Please choose your search and installation options.

Search for the best driver in these locations.

Use the check boxes below to limit or expand the default search, which includes local paths and removable media. The best driver found will be installed.

Search removable media (floppy, CD-ROM...)

Include this location in the search:

E:

Don't search. I will choose the driver to install.

Choose this option to select the device driver from a list. Windows does not guarantee that the driver you choose will be the best match for your hardware.

Pick **Search for the Best driver in these locations**

Check **Include this location in the search**

Then click **Browse**

FM7740 MODEM DRIVER UPDATE PROCEDURE



From the PCI folder you have downloaded before, browse to the folder called **WHQL_WIN2000_XP**

Then Click **OK**

FM7740 MODEM DRIVER UPDATE PROCEDURE



Hardware Update Wizard

Please choose your search and installation options.

Search for the best driver in these locations.

Use the check boxes below to limit or expand the default search, which includes local paths and removable media. The best driver found will be installed.

Search removable media (floppy, CD-ROM...)

Include this location in the search:

C:\Documents and Settings\...\Desktop\PCI\PCI\W

Don't search. I will choose the driver to install.

Choose this option to select the device driver from a list. Windows does not guarantee that the driver you choose will be the best match for your hardware.

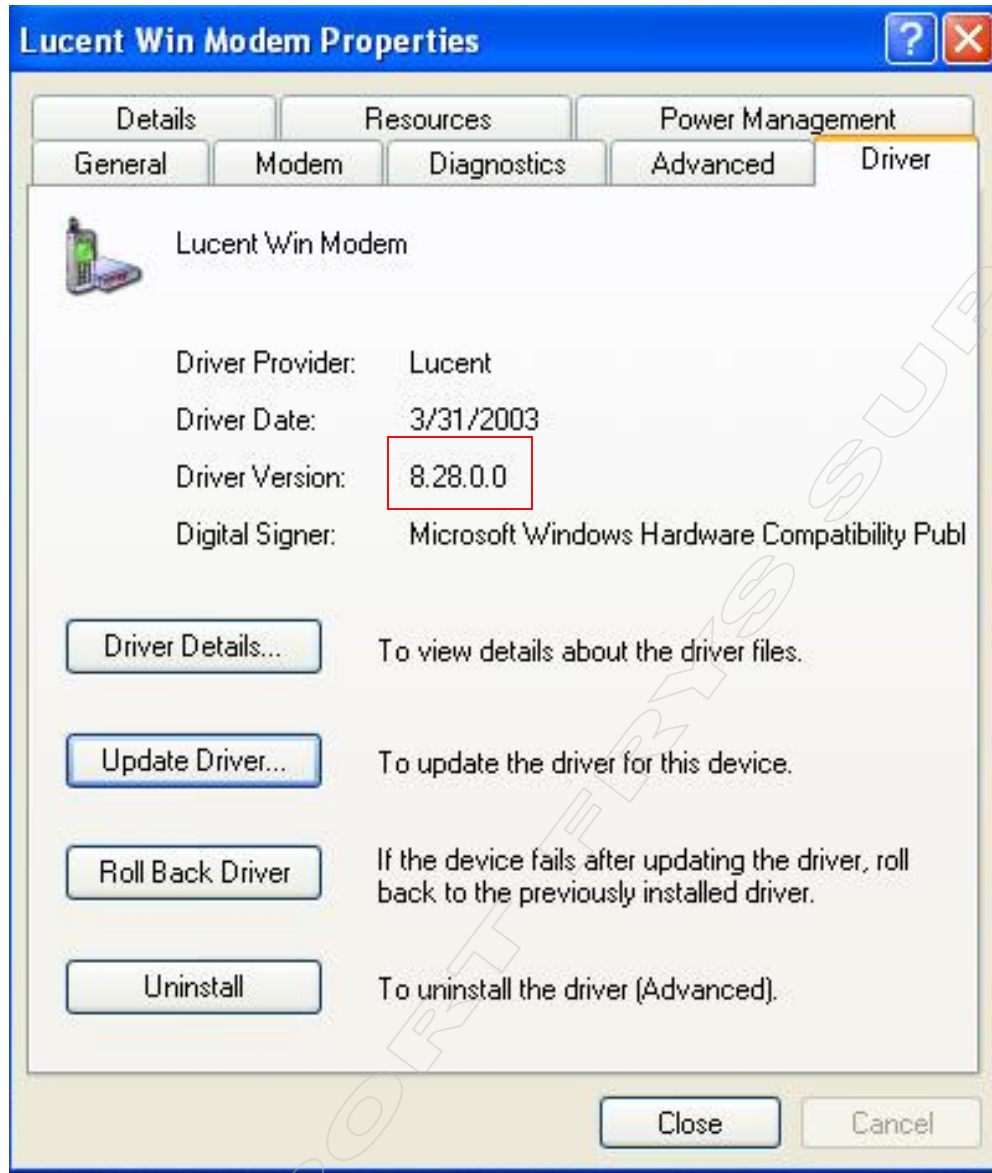
Click **Next**

FM7740 MODEM DRIVER UPDATE PROCEDURE



Windows will search and install the new driver, then click **Finish**

FM7740 MODEM DRIVER UPDATE PROCEDURE



After driver update, your Driver Version will be **8.28.0.0**