

Preface

Copyright

This publication, including all photographs, illustrations and software, is protected under international copyright laws, with all rights reserved. Neither this manual, nor any of the material contained herein, may be reproduced without written consent of the author.

Version 2.3a

Disclaimer

The information in this document is subject to change without notice. The manufacturer makes no representations or warranties with respect to the contents hereof and specifically disclaims any implied warranties of merchantability or fitness for any particular purpose. The manufacturer reserves the right to revise this publication and to make changes from time to time in the content hereof without obligation of the manufacturer to notify any person of such revision or changes.

Trademark Recognition

Microsoft, MS-DOS and Windows are registered trademarks of Microsoft Corp.

MMX, Pentium, Pentium II, Pentium III, Pentium 4, Celeron are registered trademarks of Intel Corporation.

Other product names used in this manual are the properties of their respective owners and are acknowledged.

All Rights Reserved

Model: FM7540

January 2004

Federal Communications Commission (FCC)

This equipment has been tested and found to comply with the limits for a Class B digital device, pursuant to Part 15 of the FCC Rules. These limits are designed to provide reasonable protection against harmful interference in a residential installation. This equipment generates, uses, and can radiate radio frequency energy and, if not installed and used in accordance with the instructions, may cause harmful interference to radio communications. However, there is no guarantee that interference will not occur in a particular installation. If this equipment does cause harmful interference to radio or television reception, which can be determined by turning the equipment off and on, the user is encouraged to try to correct the interference by one or more of the following measures:

- Reorient or relocate the receiving antenna.
- Increase the separation between the equipment and the receiver.
- Connect the equipment onto an outlet on a circuit different from that to which the receiver is connected.
- Consult the dealer or an experienced radio/TV technician for help.

Shielded interconnect cables and a shielded AC power cable must be employed with this equipment to ensure compliance with the pertinent RF emission limits governing this device. Changes or modifications not expressly approved by the system's manufacturer could void the user's authority to operate the equipment.

Declaration of Conformity

This device complies with part 15 of the FCC rules. Operation is subject to the following conditions:

- This device may not cause harmful interference, and
- This device must accept any interference received, including interference that may cause undesired operation.

Canadian Department of Communications

This class B digital apparatus meets all requirements of the Canadian Interference-causing Equipment Regulations.

Cet appareil numérique de la classe B respecte toutes les exigences du Règlement sur le matériel brouilleur du Canada.

Getting started

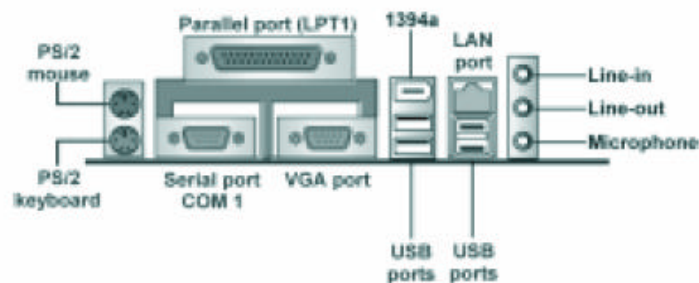
This section describes the procedure for unpacking your new computer system and accessories.

Unpacking your system

- Place the computer box flat on the floor.
- Place your feet on either of the system unit box
- Carefully lift the system unit out of the box. Lift the unit slowly and evenly until it is completely removed from the box, then set it on a flat surface.
- Set the system unit in the location where you intend to use it. Ensure that the location is well ventilated and out of sunlight.
- Save the system unit box and packing material in the event you need to move or ship the system in the future.
- Please inspect your computer to make sure that all accessories are accounted for and that there is no damage to your system. There is a Checklist of items in this manual.

Setting up your new computer

-After you unpack your new system and verify that all hardware has been received undamaged, you are ready to connect the system components if they are not already connected. Please follow the procedure set below.



Connecting a keyboard and mouse

- Plug the keyboard cable into your computer's keyboard connector.
- Plug the mouse cable into your computer's mouse connector.

Connecting the monitor

- Make sure the monitor is turned off.
- If the monitor cable is not connected to the monitor, make this connection now.
- Connect the other end of the monitor cable to your computer's monitor connector.
- Plug the monitor into an AC outlet.

Connecting the power cable

- Connect the supplied power cord to the power connector on the back of the system unit.
- Connect the other end to a grounded AC outlet, power strip, surge protector, or uninterruptible power supply.

Powering-on your system

-The electrical power used to power your computer and other AC appliances is not always steady and continuous. Often, there are bursts of energy called surges or spikes that occur on the line. These spikes can cause damage your computer and all attached peripherals. In fact, if just one device is not protected, a spike can travel through that unprotected device to all of the peripherals attached to it. For that reason, we recommend you use an uninterruptible power supply to protect your computer and all peripherals against damage caused by spikes.

TABLE OF CONTENTS

Preface	i
Getting Started	iii
CHAPTER 1	1
Introducing the System	1
Features	1
CHAPTER 2	3
Running the Factory Restore Disk	3
Technical Support	4
Restoring System.....	5
Notice about Driver Installation.....	5
FAQs:	
My computer does not turn on	6
Nothing is happening after I connected my system.....	6
Nothing is showing up on my monitor	6
I can only see 2 or 16 colors... ..	6
I cannot read what is on my monitor	7
I cannot hear any sounds	7
My modem is not dialing out. I cannot connect to the internet	8
My internet is really slow. Is there a problem?	8
My computer froze up. What should I do?	8
CHAPTER 3	10
Basic Usage and Features	10
How do I... watch TV on it? (Intervideo WinDVR)	10
How do I copy CDs? (Nero Express).....	12
How do I copy DVDs? (Nero Express)	12
How do I edit my video ? (Intervideo WinDVD Creator).....	13
Contact Information	14
Warranty Information	15

Chapter 1
Introducing the System

Features

Processor	<ul style="list-style-type: none"> Intel® Pentium 4® 2.8 GHz with Hyper-Threading 800 MHz system bus, 512KB L2 Cache
Power Supply	<ul style="list-style-type: none"> 350W max. power supply
Motherboard/ Chipset	<ul style="list-style-type: none"> ECS 865G-M <p>Intel's innovative 865G (GMCH) and 82801EB (ICH5) chipsets are based on an innovative and scalable architecture with proven reliability and performance.</p> <ul style="list-style-type: none"> Supports Dual DDR-SDRAM at 266/333/400MHz operations. USB Controller 2.0
Memory	Dual channel 256MB DDR memory comes to a total of 512MB DDR at PC 2700 (DDR 333). It accommodates four un-buffered (two used) 2.5V 184-pin slots. Total maximum capacity of system is 3 GB.
Memory Card Reader	Memory card reader that allows instant access to 8 types of portable memory. Compact Flash, MicroDrive, Memory Stick®, Memory Stick® Pro, Secure Digital, MultiMedia Card, Smart Media, xD memory card
Hard drive	120 GB Hard drive at 7200rpm
Optical Drive	52X CDROM
Optical Drive	Dual DVD+ and DVD- R/RW capable burner
Firewire (IEEE 1394)	2 firewire ports for fast data transfer rates. One in front and one in back for ease of use
USB	6 total USB 2.0 ports- 2 front, 4 back The USB 2.0 supports data transfer rates up to 480MB/sec for high-speed devices and specifies a microframe that will be 1/8 th of a 1msec frame. This allows the USB 2.0 devices to have small buffers even at high data rates. The USB 1.1 connectors and other full speed cables can support the higher speed of USB 2.0 without any changes.
VGA	<ul style="list-style-type: none"> Additional 8X AGP slot for expandability Onboard Video graphics for up to 64MB shared memory architecture
AC' 97 Audio Codec	The AC' 97 Audio codec is compliant with the AC 97 2.2 specification, and supports 18-bit ADC (Analog Digital Converter) and DAC (Digital Analog Converter) resolution as well as 18-bit stereo full-duplex codec with independent and variable sampling rates.
Onboard LAN	This system supports the Gigabit LAN by integrating the

	3Com® 3C940-32 device which is optimized for 32-bit PCI clients. It is fully compliant with IEEE802.3 and provides the system with 10/100/1000 Mbps Full/Half Duplex triple speed operation.
Expansion Options	<p>The mainboard comes with the following expansion options:</p> <ul style="list-style-type: none"> • Three 32-bit PCI slots (2 used) • One 8X AGP slot (open) • A Communications and Network Riser (CNR) slot (AC97 interface only) • Two IDE channels, SATA support, and a floppy disk drive interface <p>The mainboard supports Ultra DMA bus mastering with transfer rates of 33/66/100 MB/sec.</p>
Integrated I/O	<p>The mainboard has a full set of I/O ports and connectors:</p> <ul style="list-style-type: none"> • Two PS/2 ports for mouse and keyboard • One serial port • One VGA port • One parallel port • Six USB 2.0 ports (2 front, 4 back) • One GigaLAN port • Two Firewire port (front, back) • Audio jacks for microphone, line-in and line-out
Keyboard	<p>Smart Office keyboard designed for ease of use and quick and effective. Functions include:</p> <ul style="list-style-type: none"> • Office application keys- Open Office applications with one press of button • Wizard function keys- Have often used tools such as cut, copy, and paste at your command with one button • Many more features included directly on the keyboard
Mouse	3D optical mouse with scroll wheel for viewing documents
Speakers	Creative 2.1 Stereo speakers with subwoofer and volume control

Some hardware specifications and software items are subject to change without prior notice

Chapter 2

Running the Factory Restore Disk

Running the Factory Restore Disk will **ERASE ALL DATA** and **APPLICATIONS** that were installed onto the system after the unit has left the factory. We are not responsible for any data loss that may occur.

1. Insert the Factory Restore DVD into your DVD drive. Set your system so that it boots from the optical Drives first. For more information, please find the technical support section in this manual.
2. Restart at the end of the restore process, you will see: (By default OK is already selected)

Operation Completed, please take out disk from Floppy and CDROM. Click OK And please select (Yes) to replace (MBR) and System Will Reboot Automatically

---- OK ----

---- Cancel ----

Please remove the Disk and click **OK**

2. (By default NO is selected- Please change over to YES using the cursor keys)

Sure to replace MBR (Main Boot Record)?

---- Yes ----

---- No ----

Make sure to select **Yes**

3. You will see a screen telling you that the system will automatically reboot within 15 seconds. Please let it reboot by itself.

Your computer has been restored to the factory standard settings.

Technical Support

Please follow the steps outlined below first to configure your system before contacting technical Support:

- 1) Each time you start your computer, a message appears on the screen before the operating system loading that prompts you to "*Hit if you want to run SETUP*". When you see this message, press the **Delete** key, and the Main menu page of the Setup Utility appear on your monitor. If you don't see the message, keep tapping the Delete key and you should be able to enter the Bios.
- 2) To Navigate through Bios, please follow the directions below.

You can use the cursor arrow keys to highlight any of the options on the main menu page. Press **Enter** to select the highlighted option. To leave the setup utility, press the **Escape** key.

Some of the options on the main menu page lead to tables of items with installed values. In these pages, use the cursor arrow keys to highlight the items, and then use the **PgUp** and **PgDn** keys to cycle through the alternate values for each of the items. Other options on the main menu page lead to dialog boxes that require you to answer Yes or No by hitting the **Y** or **N** keys.

If you have already made changes to the setup utility, press **F10** to save those changes and exit the utility.

Set the System boot order under the Bios menu, under the Advanced BIOS Features in your motherboard manual to resemble the list below:

First Boot Device-	Floppy
Second Boot Device-	CDROM
Third Boot Device-	HDD-0 (or IDE-0)

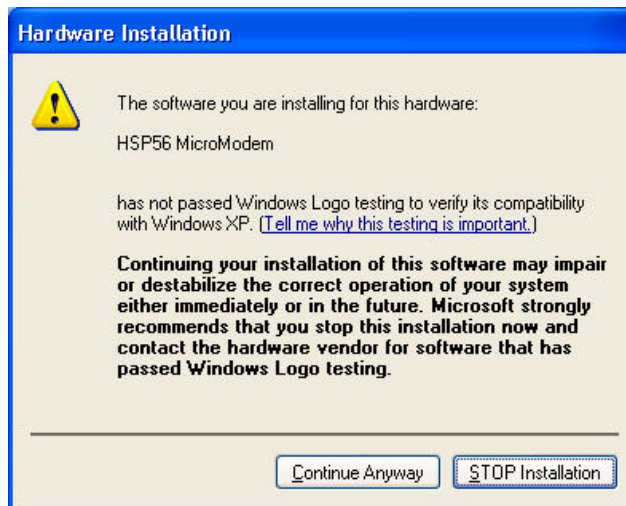
Restoring System:

If for any reason you need to restore your System to its original condition, please use the Factory Restore Disk that came with your system. Please note that by using the restore disk, the process **WILL ERASE ALL EXISTING DATA ON YOUR HARD DRIVE.** Please make backup copies of your data and store it elsewhere first. Then, insert the Factory Restore Disk into the drive, set the Bios boot order to boot from CD first, then follow all instructions on screen

Notice about Installing Drivers:

Please note that while installing drivers into your computer system, you may see the following message below stating that the driver has not been "Digitally Signed" by Microsoft. Microsoft has digitally signed all of our drivers that were installed at the factory.

If you are sure that the driver you are installing is the correct one, please click "Continue Anyway" to continue the installation. If you have doubts, please check with your hardware vendor first before installing the product.



FAQs:

- **My computer does not turn on.**

-Check the power light- Make sure that there the lights on the front of your computer system is lit. If the lights are blinking, it probably means that the computer is in standby mode. Press any key on your keyboard or move your mouse to get out of standby mode.

-Make sure that your electrical outlet is working by plugging in a working electrical appliance.

-Make sure that the power cable is firmly inserted into the electrical outlet and the computer power connector on the back of your computer system.

- **Nothing is happening after I connected my system.**

In the unlikely event that your computer does not power on:

-Make sure the power cables are securely connected to the AC source and the power connector on the back of the computer.

-If you are using a power strip, surge protector, or uninterruptible power supply, make sure it is connected to a functioning AC source and is turned on.

-Make sure the AC outlet is not controlled by a wall switch that may be turned off.

-If you suspect the AC outlet is faulty, plug an appliance that you know is working (such as a lamp) into the outlet and turn on the appliance. If the appliance works, the outlet is working.

If you can hear the power supply fan working, but nothing appears on the monitor, make sure the monitor:

-Is connected to a functioning AC outlet,

-Is attached to the appropriate connector on the back of your computer.

-Is turned on.

-Has its brightness control set at a reasonable level. If this control is set too low, it may cause a black image to appear on the monitor.

- **Nothing is showing up on my monitor.**

- Check to make sure that the monitor is powered on
- Make sure that the cable connections are firm on both ends.
- Swap the computer/monitor power and connection cables to ensure that there are no problems with the cables.

- **I can only see 2 or 16 colors on screen and my resolution can only be adjusted to 640x480 or 600x800.**

This means your onboard video card driver is not installed. To install the driver, do the following:

Put the Software CD with all the drivers into the CDROM drive

Click on "Setup" and then check the box for VGA

If the computer asks for an "OS", insert your Windows CD, wait for the CD to spin up, and then direct the computer to look for the files in the "WIN98" folder or "I386" folder for Windows® 2000 & Windows® XP.

The computer will restart before the new settings take effect.

If this does not solve your video problem, please email us at our website www.fryssupport.net

- **I cannot read what is on my monitor.**

- Adjust the contrast and brightness on the monitor
- Make sure that the sub woofer is at least 2 ft away from the monitor
- Turn off possible interference factors such as nearby fans, fluorescent lights, or even halogen lamps

- **I cannot hear any sounds coming out of my speakers.**

- Ensure that the speakers are connected to their proper connections as shown in the quick setup guide.
- Make sure that the speakers are turned on and that the volume is adjusted to a proper setting.
- Make sure that the volume is not muted from within the Windows operating system
- Make sure that the correct sound driver has been installed into the system

- **My modem is not dialing out. I cannot connect to the internet.**

-Make sure that the telephone jack is working by disconnecting the line and connecting a regular telephone. You should hear a dial tone.

-Verify that the modem is properly communicating with Windows by going to the Start→ Settings→ Control Panel

-In the control panel, double click on the modems icon. If there are multiple entries for the same modem, or modems listed that are not installed, remove/delete the entries and restart your system.

-Go back to the same place in the control panel, click on the diagnostic tab.

-Click on the COM port of your modem

-Click More Info to see that the modem is properly installed and communicates with Windows. If all commands receive responses, the modem is operating correctly. Please contact your ISP for more information.

- **My internet web surfing is really slow. Is there a problem?**

Many factors can influence modem connection speed, such as:

-Telephone line noise.

-Incompatibility with other telephone equipment such as fax machines or other modems.

-Internet Service Providers (ISP) connection capability may vary.

If you think your modem is not connecting properly to other PC-based modems, fax machines, or your ISP, check the following:

-Contact your telephone company and ask them to verify that your telephone line is free from line noise.

-If your problem is fax-related, check that there are no problems with the fax machine you are calling and that it is compatible with fax modems.

-For optimum performance, verify that your ISP point of presence (POP) telephone number is compliant with V.90 standards.

-If you are having a problem connecting with your ISP, check that they are not experiencing technical problems.

-Try connecting your modem through another telephone line, if available.

- **My Computer froze up. What should I do?**

You can try to locate and close the software application that has stopped responding.

-Press the Ctrl+Alt+Delete keys. The Windows Task Manager window appears.

-From the Applications tab, locate the application that has the status message,

“Not responding.”

-Select the application that has a **Not Responding** status and click **End Task**.
Windows attempts to close the application.

-If your computer does not respond or the application does not close, try the following steps:

- Save all open files, if possible.
- Press the **Alt+F4** keys. The **Turn Off Computer** window appears.
- Click **Restart**.

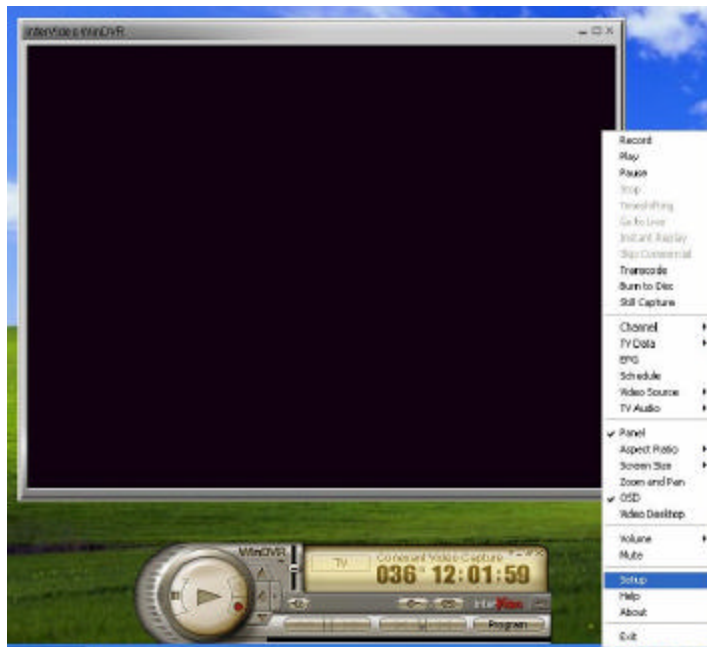
-If your computer still does not respond or restart, shut down your computer by pressing and holding the power button for more than six seconds.

-If the software application continues to stop responding or causes your computer to stop responding, contact the software publisher or designated technical support provider.

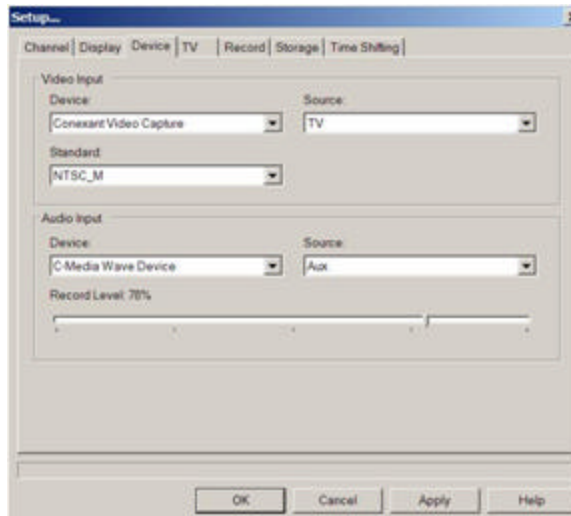
Chapter 3 Basic Usage and Features

How do I set my system so that I can watch TV on it? (Intervideo WinDVR)

1. Double click WinDV R icon
2. Right click on screen and click setup like image below

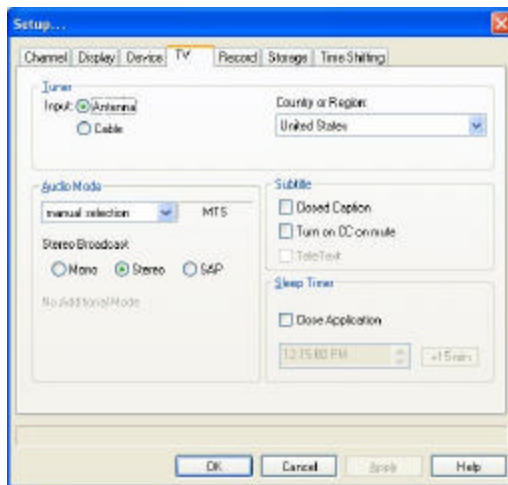


You will see the screen below:



***Please make sure that all the settings under the DE-
VICE tab is reflected in your computer system.***

Click on the TV tab



***Please make sure that all the settings under the TV tab
is reflected in your computer system.***

- Please select the appropriate TV input as Antenna or Cable.
- Please Note that your recorded TV files are stored in “My Videos” folder on your computer system
- For more instructions on how to use your WinDVR software, please refer to the software manuals provided with your system.

How do I copy CDs? (Nero Express)

1. Please double click on the Nero StartSmart Icon on your desktop
2. Select which medium you are burning to in the upper right hand corner **CD or DVD**
3. Select which type of CD/DVD you would like to burn (i.e. Data, music, etc...)



How do I copy DVDs?

Please note that you cannot make a backup copy of your commercial DVD movie without 3rd Party Software. You can still burn home DVD movies using the included software (WinDVD Creator or Nero Vision Express)

How do I edit my videos? (Intervideo WinDVD Creator)

- 1) Double click on the WinDVD Creator icon and you will see the following menu appear
- 2) Click on the option that you want to do and feel free to explore the software.
- 3) There is an excellent tutorial within the help of WinDVD Creator and we strongly encourage you to learn from within the software.



How do I edit my video files?

Fry's PC comes with 2 video editing software applications, Intervideo DVD Creator and Windows Movie Maker. For more information, please refer to the help files or the software manual that came with your system.

CONTACT INFORMATION

If you are still experiencing problems with your computer system, please try our website at:

www.fryssupport.net

Here, you will find the latest FAQ's and latest driver downloads/bios updates for your system. If you cannot find the answers to your questions, there is a form that you can email us at on the website.

You can also call our tech support line:

1-800-775-1116

Monday thru Friday, Pacific Standard Time

9am to 5pm

Warranty Information:

EXCEPT AS EXPRESSLY STATED IN THIS LIMITED WARRANTY, FRY'S PC MAKES NO OTHER WARRANTIES OR CONDITIONS, EXPRESSED OR IMPLIED INCLUDING BUT NOT LIMITED TO: ANY IMPLIED WARRANTIES OF MERCHANTABILITY AND SUITABILITY FOR ANY PARTICULAR PURPOSE. FRY'S PC EXPRESSLY DISCLAIMS ALL WARRANTIES AND CONDITIONS THAT ARE NOT STATED IN THIS LIMITED WARRANTY STATEMENT.

The limited warranty on you FRY'S PC computer system covers parts and labor against defects in material or workmanship for a period of one year from the original date of purchase.

Labor: For a period of one (1) calendar year from the date of purchase, FRY'S PC will repair the defects in the Computer System at no charge. After the one (1) year period is over, you will be responsible for all labor charges related to the repair of your Fry's computer system.

Parts: For a period of one (1) calendar year from the date of purchase, FRY'S PC will supply, at no charge, new or rebuilt (at Fry's sole discretion) replacement parts in exchange for defective parts. Any replaced parts will be warranted for the remainder of the original warranty period. All defective parts replaced under this limited warranty become the property of FRY'S PC.

This limited warranty covers only the hardware components packaged with the computer system. It does not cover technical assistance for hardware or software usage. It does not cover ANY software package whether or not it is contained in the product.

Proof of purchase in the form of a "Bill of Sale/ Invoice" (which is evidence that the product is within the warranty period) must be presented to obtain warranty service.

With respect to any and all service provided, it is YOUR responsibility to backup the contents of your hard drive, including any personal data and software that you have installed on the hard drive. It is very likely that the contents of the hard drive will be reformatted or erased in the

course of service and FRY'S PC will not, under any circumstances, be responsible for any damage to or loss of software programs, personal/business data and/or any other information stored on any media or any part of the product serviced.

IF DURING THE REPAIR OF THE PRODUCT THE CONTENTS OF THE HARD DRIVE ARE ALTERED, DELETED, OR IN ANY WAY MODIFIED, FRY'S PC IS NOT RESPONSIBLE WHATSOEVER. FRY'S PC ONLY OBLIGATION WILL BE TO RETURN THE MACHINE TO ITS ORIGINAL STATE AS IT WAS WHEN ORIGINALLY PURCHASED. (SUBJECT TO SOFTWARE AVAILABILITY)

This limited warranty does not cover any third party parts or software added to the product after purchase or any damage caused to the product by the installation of such third party products. Further, this limited warranty does not cover any physical damages, cosmetic damages, loss to any software programs or any other electronically stored data or damage due to (a) acts of God, misuse, abuse, negligence, commercial use or modifications to this product, (b) improper operation or maintenance of this product, (c) connection to improper voltage supply, (d) attempted repair by any party other than a FRY'S PC authorized service center or (e) tampering with the internal components. This limited warranty does not apply when the malfunction results from the use of this product in conjunction with accessories, components, products or ancillary or peripheral equipment where it is determined by Fry's that there is no fault with the product itself, but rather the problem is with the accessories, components, products or ancillary or peripheral equipment.

This limited warranty is invalid if the factory applied serial

number is missing or has been altered or defaced in any way.

Repair or replacement of defective parts or hardware provided under this limited warranty is the exclusive remedy of the consumer. FRY'S PC WILL NOT BE LIABLE FOR ANY INCIDENTAL OR CONSEQUENTIAL DAMAGES FOR BREACH OF ANY EXPRESSED OR IMPLIED WARRANTY, BREACH OF CONTRACT, NEGLIGENCE, STRICT LIABILITY OR ANY OTHER LEGAL THEORY RELATED TO THIS PRODUCT. SUCH DAMAGES INCLUDE, BUT ARE NOT LIMITED TO: LOSS OF PROFITS, LOSS OF REVENUE, LOSS OF DATA, LOSS OF USE OF THE PRODUCT OR ANY ASSOCIATED EQUIPMENT, DOWNTIME, AND PURCHASER'S TIME; EXCEPT TO THE EXTENT PROHIBITED BY APPLICABLE LAW.

In some states or countries/regions some exclusions or limitations of this limited warranty may not apply to you.

For service questions and product updates use your web browser and to go to www.frysupport.net or contact Fry's PC Support at 1-800-775-1116 from 9AM to 5PM PST (Pacific Standard Time) Monday through Friday.