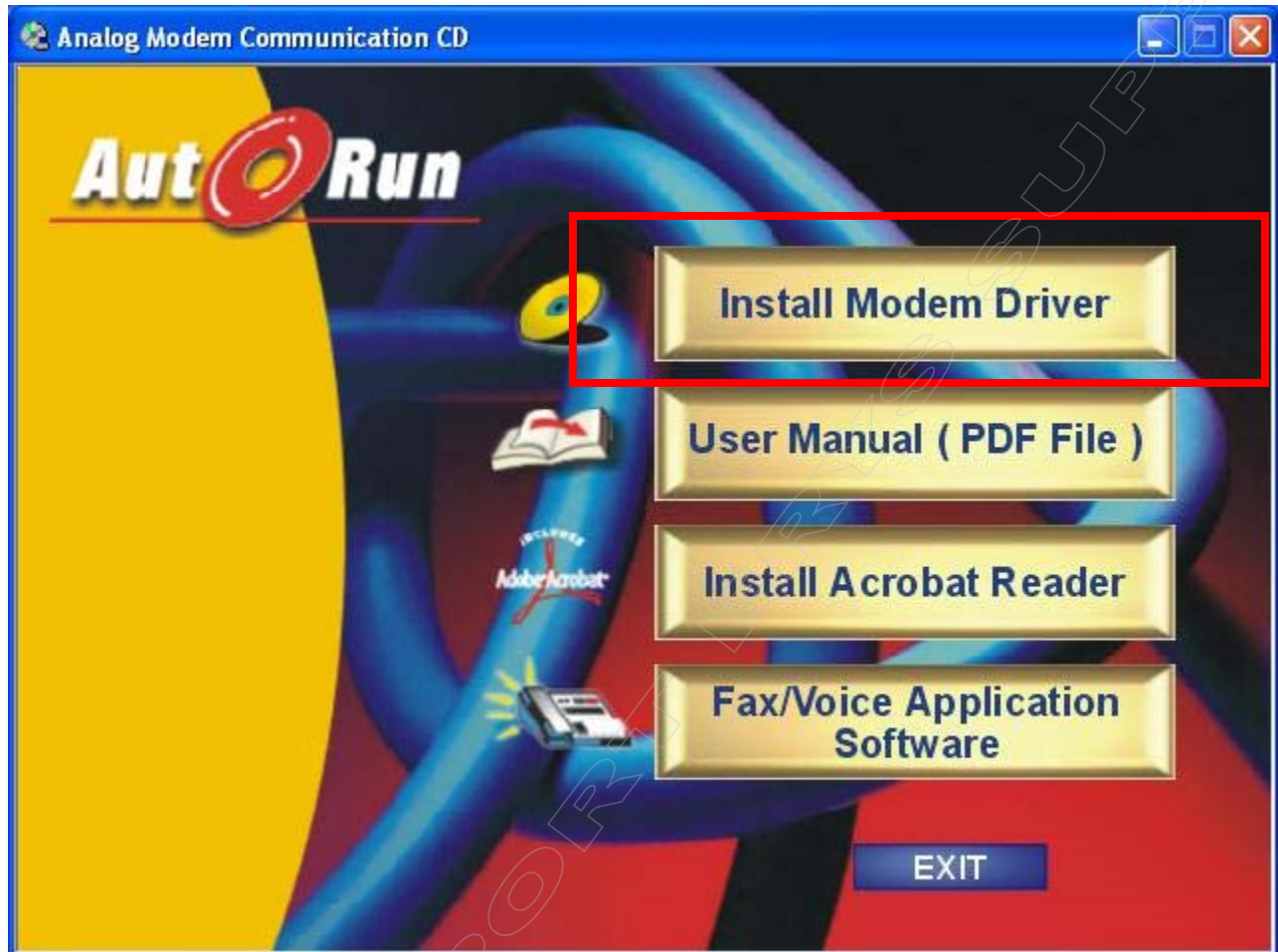


ANALOG MODEM DRIVER INSTALLATION GUIDE

Insert the Modem driver CD into the CD/DVD ROM drive. The CD will “AutoRun”. If your CD does not “AutoRun,” please go to **My Computer** and left mouse **double click** on the CD/DVD ROM drive that has the **Modem driver CD**.



Left mouse click on **Install Modem Driver**

ANALOG MODEM DRIVER INSTALLATION GUIDE

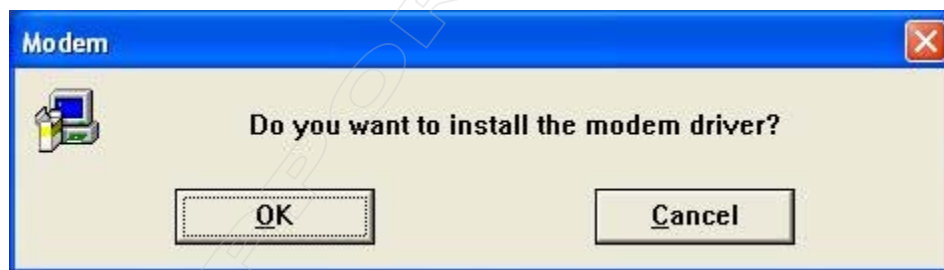


Left mouse click on **Controllerless Modem**

ANALOG MODEM DRIVER INSTALLATION GUIDE



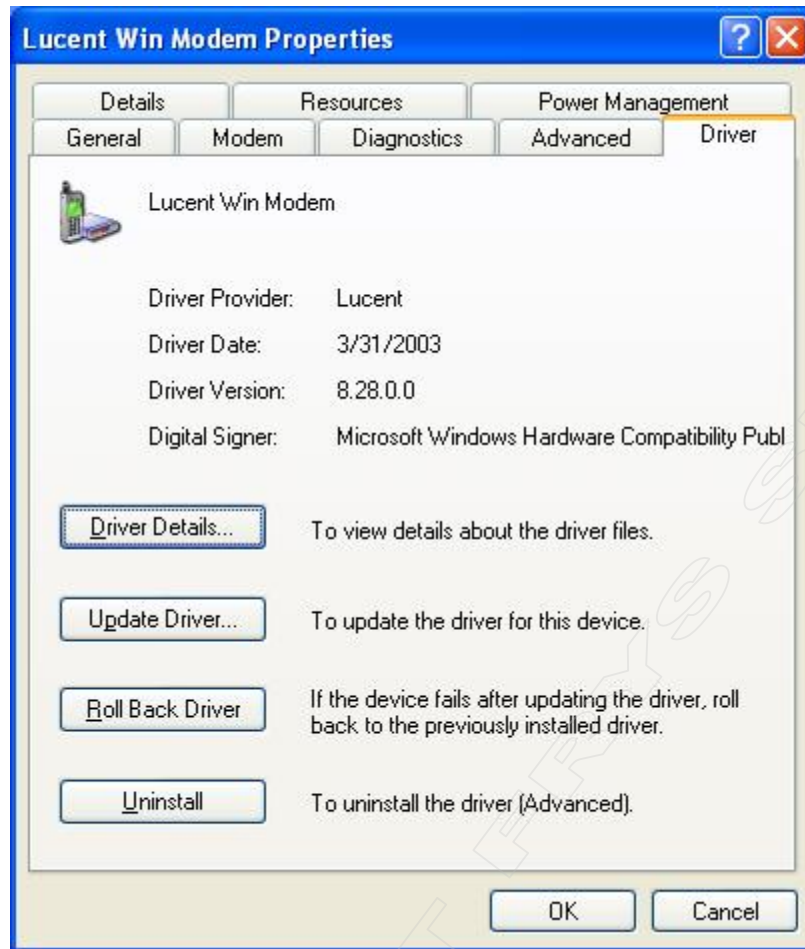
Left mouse click on **Win XP**



Left mouse click on **OK**

After the installation is completed, please **restart** your system for the setting to take effect.

ANALOG MODEM DRIVER INSTALLATION GUIDE



After update your driver version for the modem will be **8.28.0**
Please go to **Device Manager** to check the driver version.

Click **Start**, and then click **Control Panel**.

Click **Performance and Maintenance**, and then click **System**.

Click the **Hardware** tab, and then click **Device Manager**.

Click **Modem** and Double Click **Lucent Win Modem** then click on the **Driver** tab to find the version number.